

FEATURING

SideWinder™

Highly efficient LED SideWinder™ modules provide direct and indirect lighting for closed face and halo lit channel letters. Products are UL recognized for indoor and outdoor applications. SideWinder delivers high brightness and low power “green technology” using cost-effective 5mm LEDs.

- **High Brightness:**

SideWinder produces brightness values equal to and exceeding neon, even in white! SideWinder is exceptional for side-illumination with narrow beam LEDs and direct illumination with 50° and 165° beam angles.

- **A Choice of Two SideWinder™ Systems:**

Allow one of our in-house estimators to help you determine which SideWinder system is best for your application. Free estimates and layouts are provided.

- ▶ **Side-Illumination:** The SideWinder’s side-illumination system uses high brightness, LED modules that flood the letter evenly.
- ▶ **Back-Lit Illumination:** The Sidewinder BL (back-illumination) system uses 165 degree high brightness, LED modules that provide maximum brightness with even illumination. This product is ideal for very deep and unusually shaped letters/cans.

- **Even Illumination:**

SideWinder provides even illumination in channel letters as shallow as 2½ inches.

- **Easy to Install:**

Install SideWinder with peel and stick fastening VHB (very high bond) foam tape, with VHB mounting clips, or mounting with screws or rivets. For indirect lighting, just ring the modules around the return near the base of the letter. Modules are pre-wired. Terminate the 18AWG wires to power supplies with wire nuts.

- **Extended Life:**

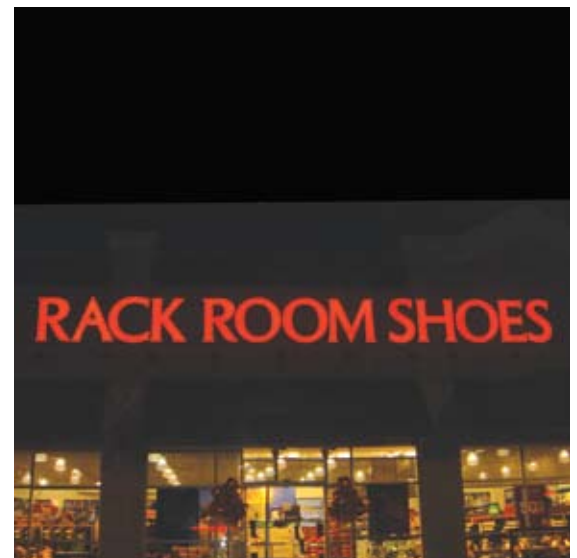
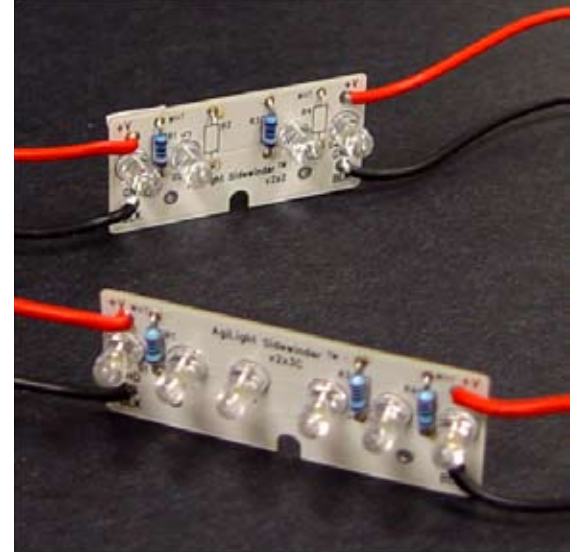
- ▶ **No Heat:** AgiLight uses multiple, high-brightness, highly efficient, 5mm, LED packages that generate little heat, extending the life LED’s life. No heat sinks are required as with higher wattage LEDs.
- ▶ **Proper Drive Characteristics:** Unlike many LED systems that have short life-spans and high maintenance costs, AgiLight systems are driven properly to meet the life expectations of the demanding signage industry.

- **Moisture and Humidity Resistant:**

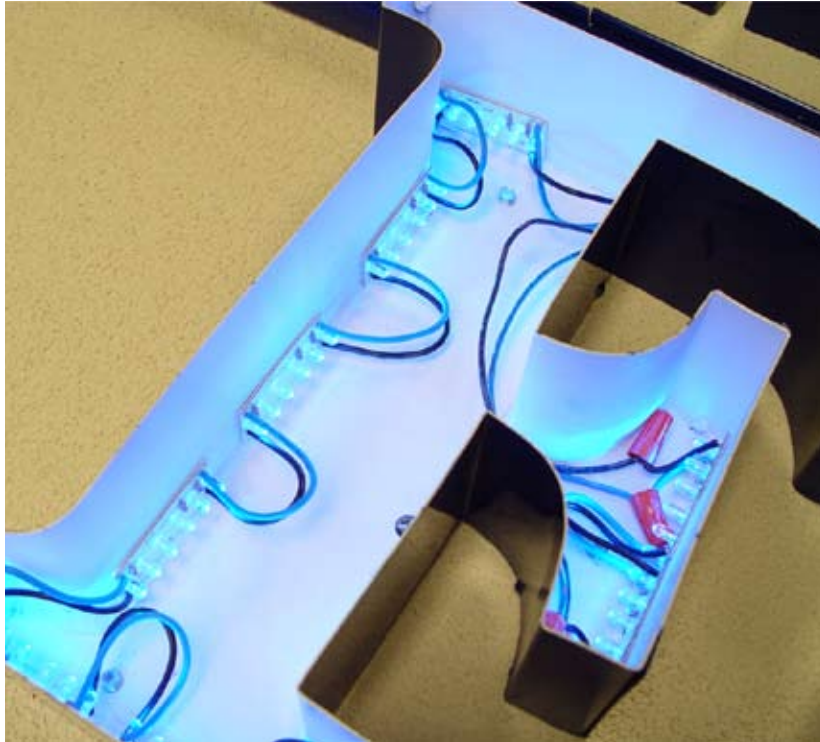
Modules are conformally coated and pass Mil-Std-883 testing including salt spray and 85°C / 85% R.H. for ten days.

- **Consistent Color:**

AgiLight bins all of its LEDs to the tightest color specifications to produce matching colors with even brightness from module to module. With whites, AgiLight offers three color temperatures: warm 3000-3500°K, medium 3500-4000°K, and cool white 4500-5500°K.



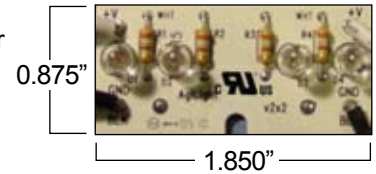
SideWinder™



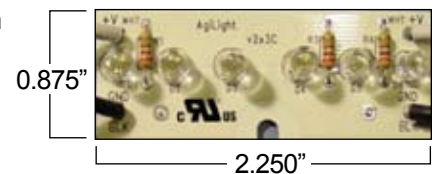
White LEDs mounted for indirect illumination of an orange and a white acrylic face. Please consult the Applications Engineering Department for ideas to enhance your lighting project.



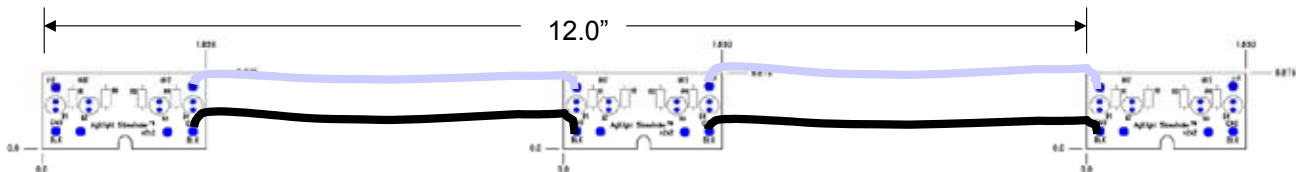
Red & Amber SideWinder Modules



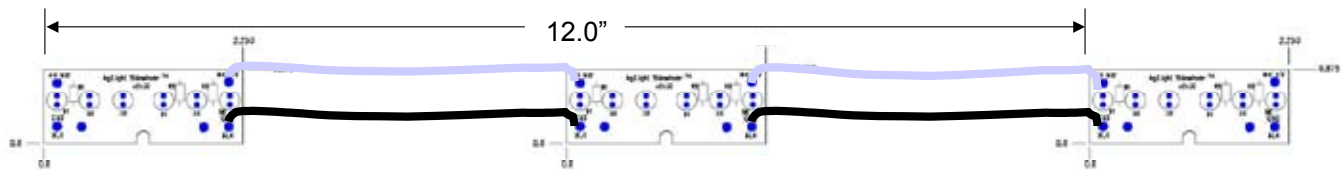
White, Green & Blue SideWinder Modules



Red/Amber SideWinder Modules:



White/Green/Blue SideWinder Modules:



Part No.	Color (X)	Beam Pattern (Viewing Angle)	LEDs/Module	LEDs/Foot	Light Output (Candelas)	Input (V DC)	Current (Amps/Module)	Power (Watts/Module)	Module Length (inches, mm)	Max String for 5A P/S (feet)
AGI-SW1-X-ZZ	A=Amber	30° typ	4	2	38	12	0.078	0.94	1.85" 46.9mm	32
AGI-SW1-R-YY-ZZ	R=Red	YY 30=30°	4	2	45	12	0.078	0.94	1.85" 46.9mm	32
		YY 50=50°	4	2	42	12	0.078	0.94	1.85" 46.9mm	32
		YY 60=165°	4	2	38	12	0.078	0.94	1.85" 46.9mm	32
AGI-SW1-X-ZZ	G=Green B=Blue	30° typ	6	2	40	12	0.066	0.79	2.25" 57.2mm	35
AGI-SW1-W-YYY-ZZ	W=White	See below	6	2	40	12	0.066	0.79	2.25" 57.2mm	35

Color Code "X" R=Red, A=Amber, G=Green, B=Blue, W=White
 Beam Angle Code "YY" 20=20°, 50=50°, 60=165°
 Color Temp Code "3rd Y" 3=3000 to 3500K, 4=3500 to 4000K, 5=4500 to 5500K
 Length Code "ZZ" 06=6 feet, 50=50 feet (standard length per box), if a half foot length is required, use ".5" as a suffix (i.e. 19.5=19½ feet)
 *Note: Each SideWinder module is burned in for 4 hours at 65° C.